



Forged Check Valves
Fig. R800 Class 800
Size ½" – 2" (DN 15 – 50)



FIG. R800

CHECK VALVE

BS5352, MSS SP 118 & ASME B16.34

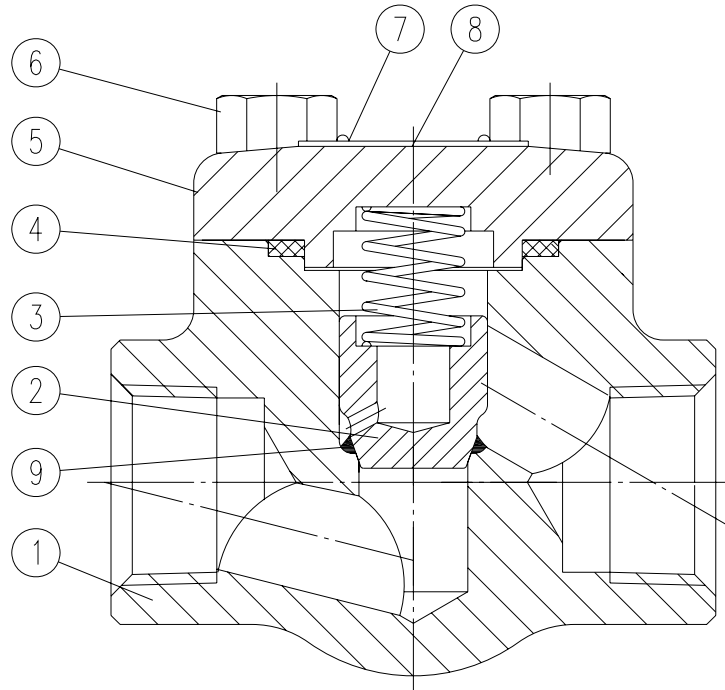
Connections according to:

ANSI B 1.20.1 (NPT)

ANSI B 16.11 (SW)



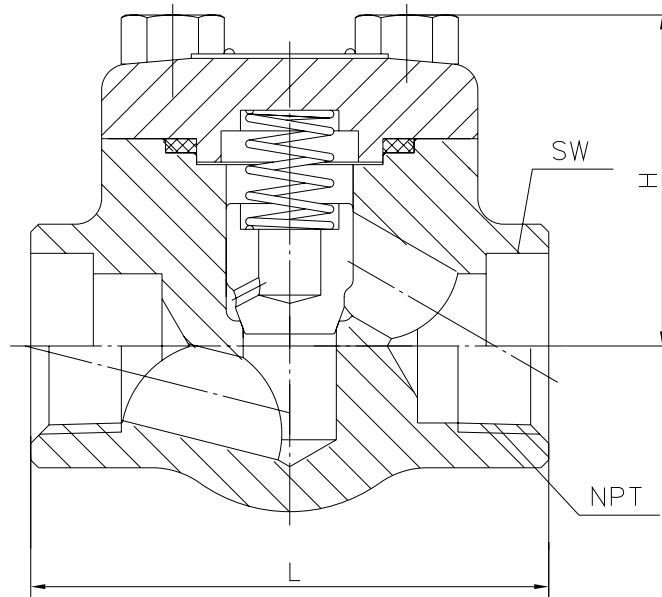
Parts and materials



Item	Description	Material	
		Carbon Steel	Stainless Steel
1	Body	A 105	A 182 F316L
2	Piston disc	A 276 420	A 182 F316L
3	Spring	17-4 PH	
4	Gasket	AISI 304 + Graphite	AISI 316 + Graphite
5	Bonnet	A 105	A 182 F316L
6	Bolt	A 193 B7	A 193 B8M
7	Ribet	A 182 F304	A 182 F316
8	Nameplate	Aluminium	
9	Seat	A 105 + STL	A 182 F316L + STL



Forged Check Valves Fig. R800 Class 800 Dimensions



Dimensions

SIZE	L	NPT	H
½" (DN 15)	73	½"	50
¾" (DN 20)	80	¾"	53
1" (DN 25)	100	1"	64
1¼" (DN 32)	114	1¼"	80
1½" (DN 40)	145	1½"	85
2" (DN 50)	160	2"	102

(*) Dimensions in mm.



Forged Check Valves Class 800

General Characteristics, P&T Rating

GENERAL CHARACTERISTICS	Forged Check Valve	Fig. R800	
DESIGN STANDARDS			
Valves design	BS 5352	MSS SP 118	ASME B 16.34
Connections	ANSI B 1.20.1	ANSI B 16.11	
Face to face dimensions	Manufacturer's standard		
TESTS AND CERTIFICATES	API 598		
Quality Assurance	ISO 9001		
Pressure testing	EN 12266-1		
Marking	EN 19		

Pressure-Temperature

